

BACK IN THE JUNGLE

TRUMPET IN B \flat 1
TRUMPET IN B \flat 1

GUNHILD CARLING
DEC -14

$\text{♩} = 120$

DRUMS 2 B JUNGLE MARCH WA **A** WA-

7 $\text{♩} = 240$ TRUMBREAKE 4 T 3

13 **C** 6 WA WA WA WA

21 6 WA WA WA WA

29 **D** 3 WA WA 4

37 **E** MELODY! PLAY HOT!

41

45 **F** BRIDGE!

49 **G** WA WA WA 3 YEAH!

57

TRUMPET IN B♭ 1

2

TRUMPET IN B♭ 1

58 WA 4 WA WA WA WA

65 H 7 WA GROWL

73 I 6

81 J 2

87 5

97 K

102

107 L

112 WA-WA-AW-WA- 6 6

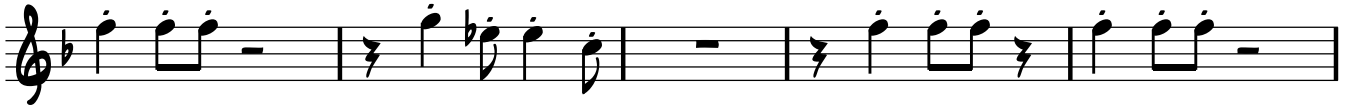
127 WA-WA-AW-WA- M 5

137 N O 8

TRUMPET IN B \flat 1

TRUMPET IN B \flat 1

150



155



161 **P**



167



173

