

TENOR 1

FIRE ALARM

G. CARLING

$\text{♩} = 270$
2
WA/WA
$\dot{0}$
$\dot{0}$
1-2

9 **(A)**

13

18

21

25 **(B)**

29

33 **(C)**

37

41 **(D)**

p

V.S.

TENOR 1

47

p

52

E 8 **F**

57-64 *p*

68

G 8 **H** 7

73-80 81-87

89

I **J** 7 **K** 2

98-104 105-106

110

L **M**

113 VOCAL *f*

7 8

114-120 121-128

129

N **O** 3

137-139

TENOR 1

(P) 8 **(Q)**

145-152

157 2

159-160

163

168 **(R)**

174 **(S)**

180

(T) 6 2 ♩=100

185-190 191-192

4

TENOR 1

193

(U)



197

(V)

♩=270



202

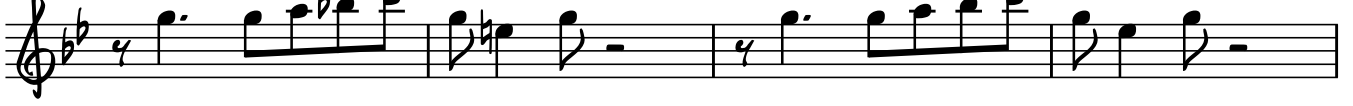
(W)



208



213



217

