

TROMBONE 3

FIRE ALARM

G. CARLING

$\text{♩} = 270$
4
1-4

9 (A) 5 WA-WA...
10-14

18

25 (B)

33 (C)

(D) 7 8
41-47 49-56

57 (E)

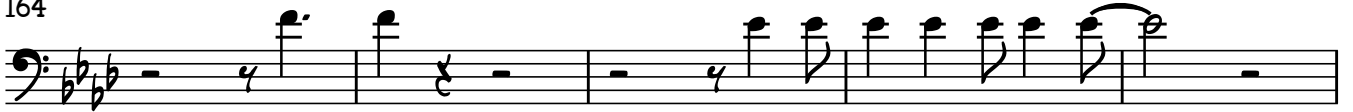
(F) 8
65-72

TROMBONE 3

158

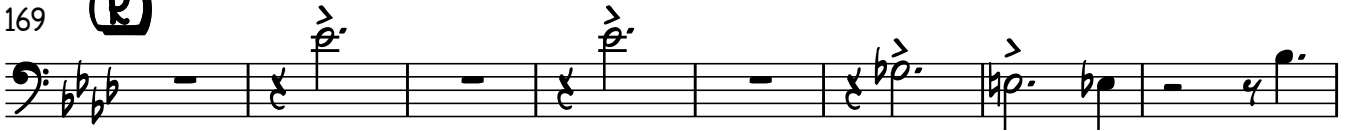


164



169

(R)



177

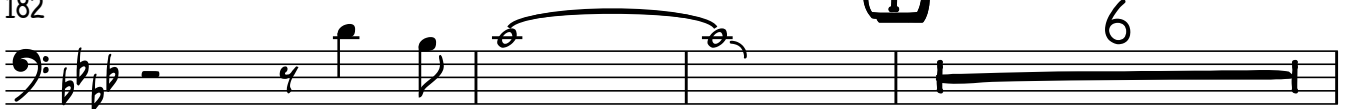
(S)



182

(T)

6



185-190

191-192

2

(U)

$\downarrow = 100$



197

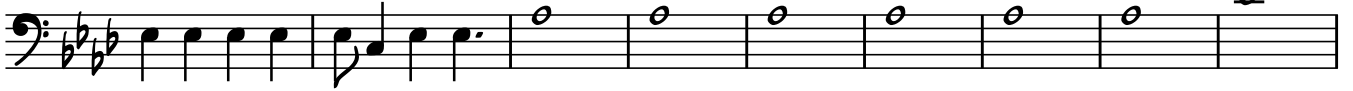
(V)

$\downarrow = 270$



203

(W)



212



217

