

ALTO 1

# FIRE ALARM

G. CARLING

$\text{♩} = 270$

8 1-2 WA/WA (A)

12

17

21

25 (B)

29

33 (C)

37

41 (D)

46 *p*

52 *p* (E)

8

ALTO 1

2<sup>65</sup> **(F)**  
 Musical staff with notes and rests. *p*

69  
 Musical staff with notes and rests.

**(G)** 8 **(H)** 7  
 Musical staff with long horizontal lines and notes. 73-80 81-87

89 **(I)**  
 Musical staff with notes and rests.

**(J)** 8 **(K)** 2 WA/WA  
 Musical staff with long horizontal lines and notes. 97-104 105-106

110  
 Musical staff with notes and rests.

**(L)** **(M)**  
 Musical staff with long horizontal lines and notes. VOCAL *p* 114-120 121-128

129 **(N)**  
 Musical staff with notes and rests.

**(O)** 3  
 Musical staff with long horizontal lines and notes. 137-139

**(P)** 8 **(Q)**  
 Musical staff with long horizontal lines and notes. 145-152

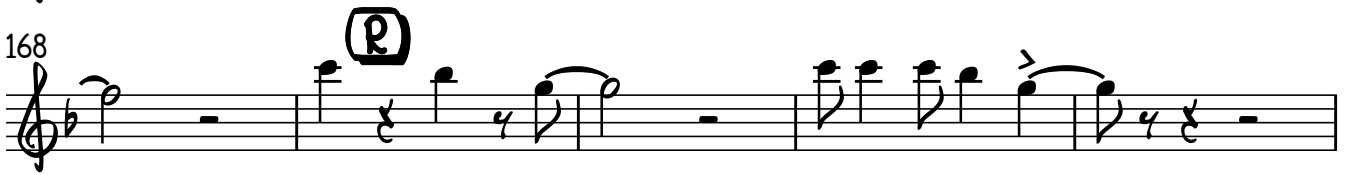
157 2  
 Musical staff with long horizontal lines and notes. 159-160

ALTO 1

163



168



173



177



181



195



200



205



209



214



218

